

Project _____

Item Number _____

Quantity _____

ABDR52



Automatic Bun Divider/Rounder

Model:

➤ ABDR52 0.42oz. to 1.05oz. (12g to 30g)

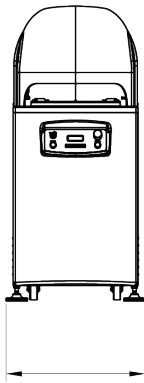
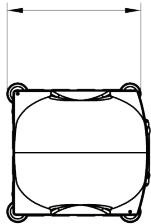
Features:

- Automatically divides and rounds
- Produces 52 equal weighted and shaped pieces at once
- Can produce 9300 pieces an hour
- Strong hydraulic powered machine
- Simple to use leveling feet
- Simple controls: dual start buttons for safety
- Multiple languages
- Programmable control board

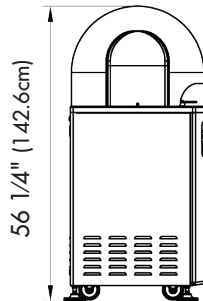
Production estimate is based off a 20 second start-to-finish process with prep time included

Bun Divider/Rounder

26 1/2" (67.3cm)



26 1/2" (67.3cm)

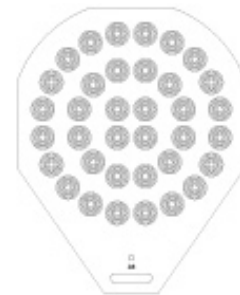


56 1/4" (142.6cm)



Standard Accessories:

- Three clear 52 division trays



Univex Corporation

NEMA #: L-15-20-P

Electrical Information (60Hz)

	Voltage	Phase	hp(kW)	Amps
Standard Voltage	208-240	3	1.7 (1.3)	6.87
Optional Voltage	110	1	1.6 (1.2)	20

Warranty:

- One year, on-site parts and labor

Shipping Information

Net Weight	Shipping Weight	Overall Dimensions
451.9 lbs. (205Kg)	563 lbs. (255.4Kg)	65" (165.1cm) H x 29.5" (74.9cm) W x 29.5" (74.9cm) D