



# ELECTRIC

ELECTRIC COUNTERTOP | GRIDDLES

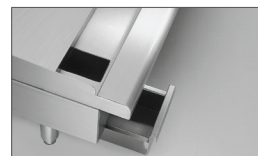
# IMPERIAL



## ITG-36-E

Model Numbers

ITG-24-E  
ITG-36-E\*  
ITG-48-E\*  
ITG-60-E\*  
ITG-72-E\*



STAINLESS STEEL GREASE GUTTER AND 1 GAL (3.8 L) GREASE CAN.



ELEMENTS LOCATED DIRECTLY UNDER GRIDDLE PLATE FOR EVEN HEATING.

## ELECTRIC ELEMENT

- Thermostat maintains selected temperature during peak hours.
- 4 KW serpentine elements located under entire griddle plate.
- Maximum temperature is 550°

## GRIDDLE PLATE

- Thick, highly polished steel plate holds temperature and has a quick recovery.
- Full 24" (610 mm) plate depth for more cooking surface.
- Surface is ideal for a large range of menu items.
- Optional chrome griddle top is available as an option.

## GREASE MAINTENANCE

- Stainless steel grease gutter is 4" (102 mm) wide.
- Large 1 gal (3.8 L) capacity grease can has a weep hole to indicate when full.
- Grease can removes easily.

## EXTERIOR FEATURES

- Stainless steel front, sides, splash guard, and ledge.
- Stainless steel ledge is one piece rolled for cleaning convenience.
- Range match profile when placed on a refrigerated base or equipment stand.
- Control knobs are constructed of virtually unbreakable plastic.
- 4" (102 mm) stainless steel legs are included.
- One year parts and labor warranty.

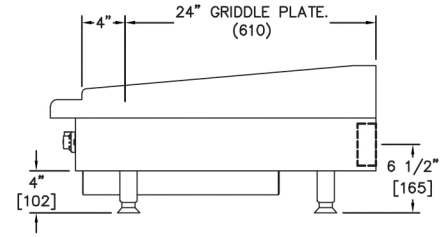
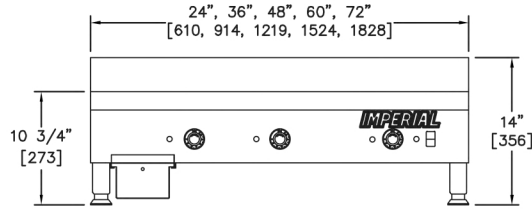
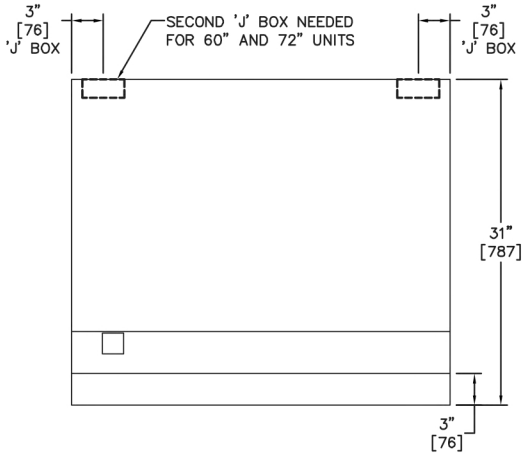


\* Items ITG-36-E; ITG-48-E; ITG-60-E and ITG-72-E are ENERGY STAR® certified



# ELECTRIC

ELECTRIC COUNTERTOP | GRIDDLES



## ELECTRIC THERMOSTATICALLY CONTROLLED GRIDDLES

MODEL	WIDTH INCHES (MM)	NUMBER OF ELEMENTS	SHIP WEIGHT	
			KG	LBS
ITG-24-E	24" (610 MM)	2	136	300
ITG-36-E*	36" (914 MM)	3	195	430
ITG-48-E*	48" (1219 MM)	4	261	575
ITG-60-E*	60" (1524 MM)	5	328	725
ITG-72-E*	72" (1829 MM)	6	396	875

MODEL	GRIDDLE PLATE DIMENSIONS	DIMENSIONS	CRATED DIMENSIONS
ITG-24-E	24" W X 24" D (610 X 610)	24" W X 31" D X 14" H (610 X 787 X 356 MM)	26-1/2" W X 36" D X 16-1/2" H (673 X 914 X 419 MM)
ITG-36-E*	36" W X 24" D (914 X 610 MM)	36" W X 31" D X 14" H (914 X 787 X 356 MM)	38-1/2" W X 36" D X 16-1/2" H (978 X 914 X 419 MM)
ITG-48-E*	48" W X 24" D (1219 X 610 MM)	48" W X 31" D X 14" H (1219 X 787 X 356 MM)	50-1/2" W X 36" D X 16-1/2" H (1283 X 914 X 419 MM)
ITG-60-E*	60" W X 24" D (1524 X 610 MM)	60" W X 31" D X 14" H (1524 X 787 X 356 MM)	62-1/2" W X 36" D X 16-1/2" H (1588 X 914 X 419 MM)
ITG-72-E*	72" W X 24" D (1829 X 610 MM)	72" W X 31" D X 14" H (1829 X 787 X 356 MM)	74-1/2" W X 36" D X 16-1/2" H (1892 X 914 X 419 MM)

### CLEARANCE REQUIREMENTS

For use only on non-combustible surfaces. Provide 0" clearance from non-combustible surfaces and 6" (152 mm) from combustible surfaces

### OPTIONS AND ACCESSORIES

- Stainless steel equipment stands
- 6" (152 mm) casters for equipment stands
- 5" (127 mm) deep, stainless steel front landing ledge
- 7" (178 mm) deep, stainless steel front landing ledge
- Chrome griddle top, (add "-CG" to model number)
- Extra grease can



AMPERAGE REQUIREMENTS				
MODEL	TOTAL KW	VOLTS	PH	AMPS
ITG-24-E	8	208	3	29
	8	240	3	25
ITG-36-E*	8	480	3	13
	12	208	3	34
ITG-48-E*	12	240	3	29
	12	480	3	15
ITG-60-E*	16	208	3	58
	16	240	3	50
ITG-72-E*	16	480	3	25

AMPERAGE REQUIREMENTS					
MODEL	TOTAL KW	VOLTS	PH	AMPS J-BOX	
				A	B
ITG-60-E*	20	208	3	34	29
	20	240	3	29	25
ITG-72-E*	20	480	3	15	13
	24	208	3	34	34
ITG-72-E*	24	240	3	29	29
	24	480	3	15	15



\* Items ITG-36-E; ITG-48-E; ITG-60-E and ITG-72-E are ENERGY STAR® certified

